

CIMENTO®

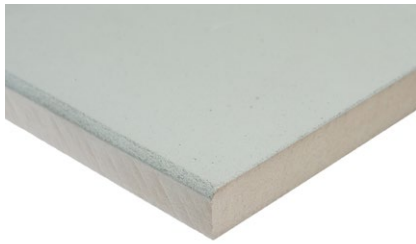


CIMENTO® PANELS

Product data sheet

Description

CIMENTO® PANELS is a product designed to be applied in indoor settings for the creation of false walls and false ceilings. **CIMENTO® PANELS** applies the typical finish of **CIMENTO®** to different substrates according to the customer's needs.



MDF



PLYWOOD

Destination of use

CIMENTO® interior **PANELS** are to be considered furnishing elements and have no structural function. They are therefore the ideal solution for the construction of false ceilings and false walls. **CIMENTO® PANELS** are not suitable for applications subject to mechanical and chemical stress such as kitchen tops, bathrooms and damp environments

Characteristics of CIMENTO® PANELS interior PANELS

CIMENTO® PANELS are available in different standard sizes or, upon customer request, they can be supplied cut to size, according to the project specifications.

dimensions	weight	thickness
MDF max 3600 x 1200 mm (custom on request)	20 kg/m ²	22 mm
Plywood max 2900 x 1200 mm (custom on request)	11-18 kg/m ²	15-22 mm

Finishes and available colors

CIMENTO® PANELS are available in a wide range of standard colors, which are obtained with the use of natural oxides-based pigments. These pigments allow the product to achieve a high color stability

LISCIO						
VIBRATO						
SABBIATO						
ORDITO 7.1 - 7.3 - 7.5						
	CL01	CL02	CL04	CL05	CL06	CL10

Further colors are available on request. Contact the **CIMENTO®** sales office.

Note

For the installation of **CIMENTO® PANELS**, it is possible to provide different fixing systems depending on the specifics of the project and customer needs (check the installation and maintenance manual). The installation must be carried out by specialized personnel.

CIMENTO® PANELS can be easily worked with common tools. It is recommended to use blades, discs, abrasives, etc. in suitable material (eg diamond blades).

Cleaning e Maintenance

Do not use chemicals, abrasive cleaners, solvents, and polishing products. The **CIMENTO®** surface is treated with a protective system that prevents the penetration of dirt, be it dry, wet, or greasy, and facilitates cleaning operations.

The characteristic coexistence of smooth and porous parts requires some simple precautions during ordinary cleaning. It is important to prevent dirt and deposits from being moved and accumulating in the porous portions, especially in the case of moist or greasy substances.

For ordinary maintenance the following operations are recommended, to be carried out in the following order:

1. Preliminarily remove all dry deposits with a vacuum cleaner equipped with a soft bristle brush, to remove dust and solid residues from both smooth and porous areas of the surface.
2. Rub the surface with a dry microfibre cloth or moistened with water, then dry, if necessary, with an additional clean and dry microfibre cloth to avoid leaving marks.
3. If the surface comes into contact with staining substances, act on the affected area with a cloth moistened with ammonia solutions or similar products (avoiding degreasers that require abundant rinsing) then dry with a clean, dry cloth. Do not use aggressive acid-based, solvent-based, or abrasive agents.

Any variations with respect to the sample are not to be considered defects but as a characteristic of the product and its manual processing which can cause variations in tone. Therefore, Sai Industry srl does not assume any responsibility in case of variations; they are not to be considered defects and are not covered by warranty, in particular for products purchased at different times.

For detailed information on installation, design and maintenance, please refer to the appropriate manuals. Whenever needed contact the **CIMENTO®** sales office.

Storage

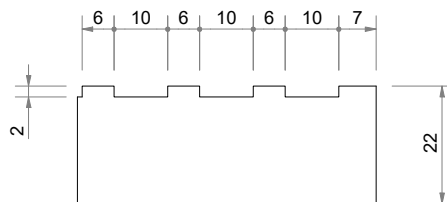
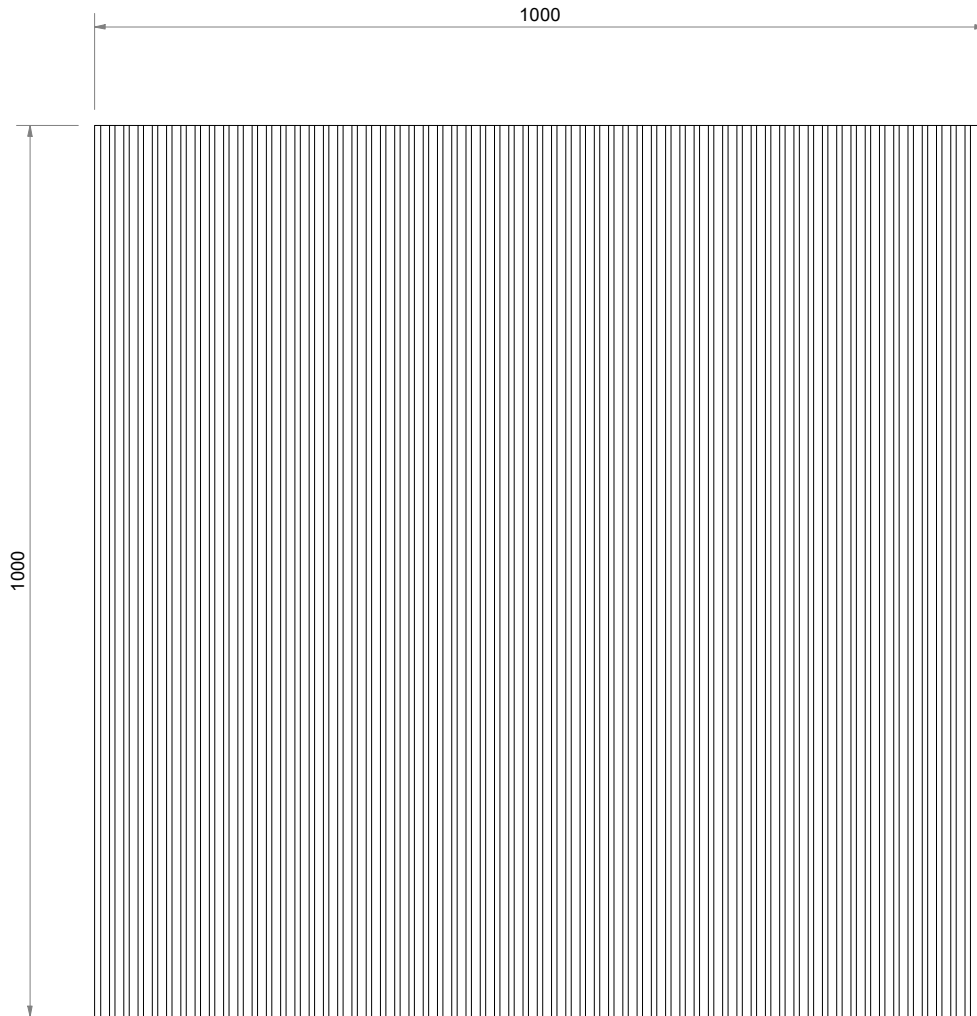
Protect edges and corners from knocks with special protections to avoid possible chipping.

Protect the sheet from contacts with staining substances, blades, and sharp objects, or scratches that could damage the **CIMENTO®** finish by storing it in the appropriate packaging.

Store the slabs on a flat, levelled, and dry surface, ensuring a homogeneous support over the entire surface.

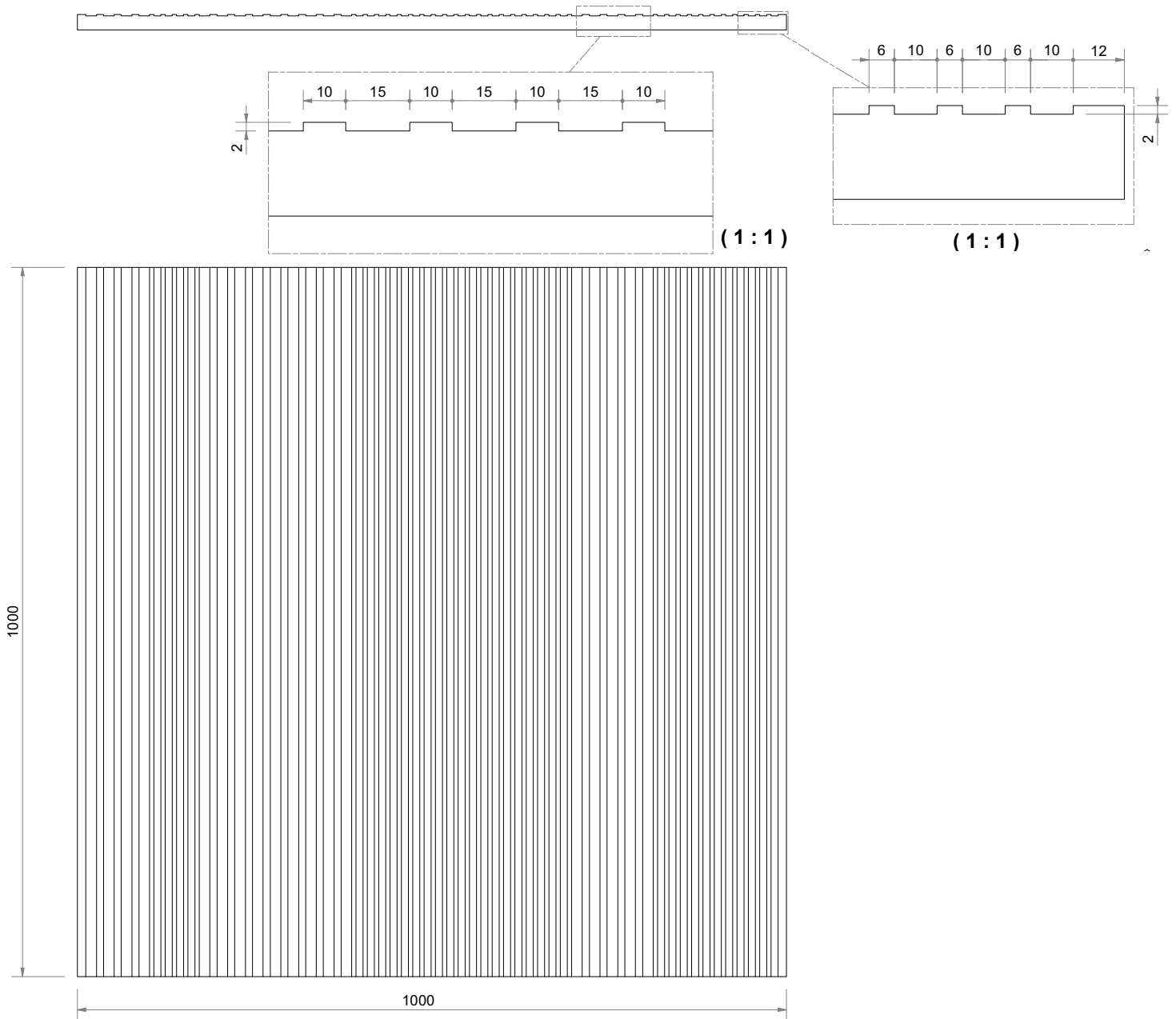
It is possible to stack packages of the same size. Do not overlap the packaging with other materials that may damage the packaging or the sheets.

ORDITO 7.1 - TECHNICAL DRAWING

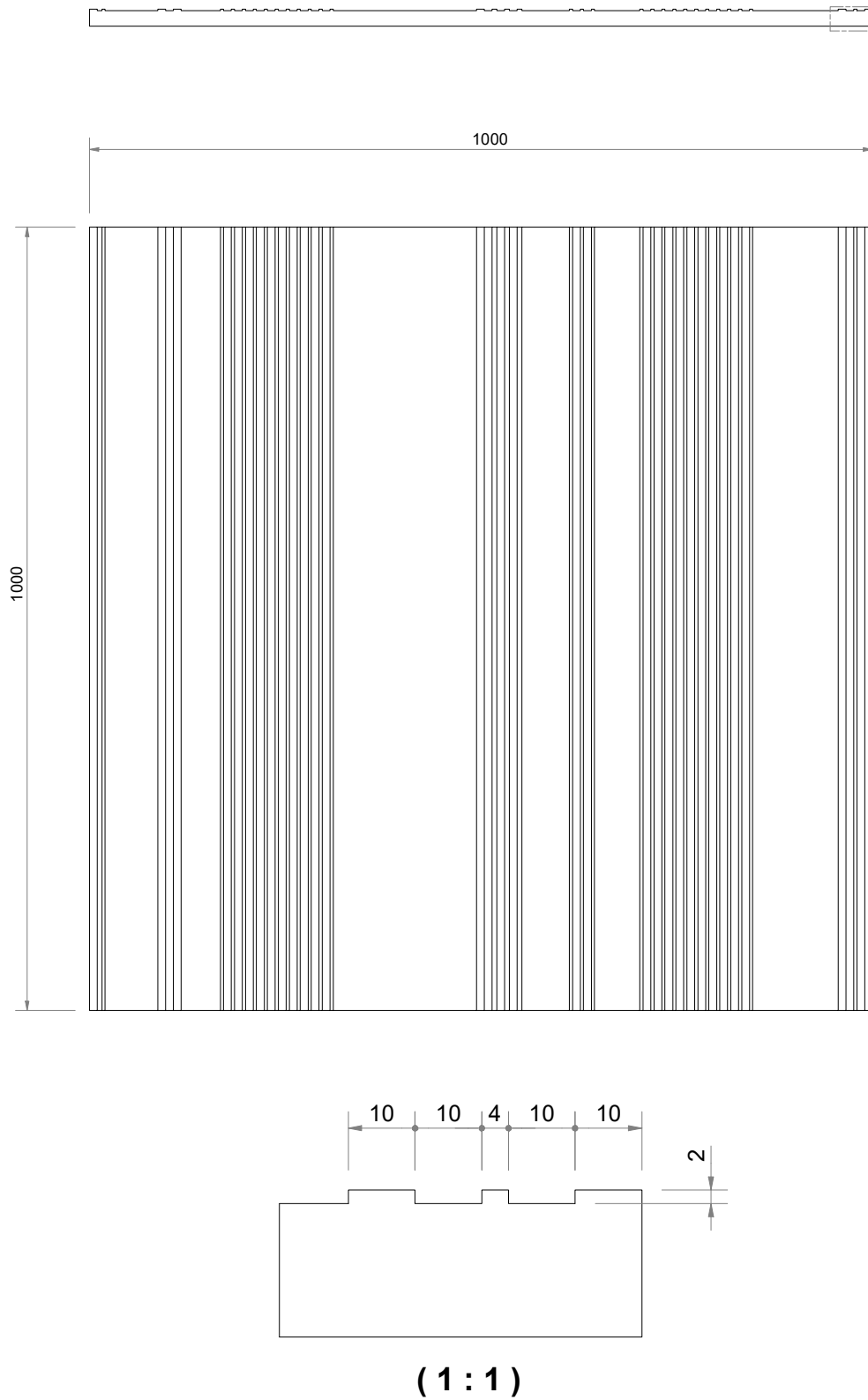


(1 : 1)

ORDITO 7.3 - TECHNICAL DRAWING



ORDITO 7.5 - TECHNICAL DRAWING



Certifications CIMENTO® PANELS

TECHNICAL FEATURES	RULE	EVALUATED PARAMETER	OUTPUT	
Finishing Thickness	Inside test	CIMENTO® typical finishing thickness	2.0-2.5 mm	
Kind of substrate	Inside test	Examples of materials which can be finished with CIMENTO® (the compatibility with a substrate need to be checked accordingly to the material designated use, paying high attention to the thermohygroscopic characteristics)	Plywood panels; Wood fibre panels (MDF, chipboard); HPL glass; ceramic; fibrocement; plastic materials	
		Allowed substrate thickness	1-50mm	
Finishing Density	Inside test	Average volume weight	≈2000 kg/m ³	
		Average surface weight	≈2 kg/m ² .mm	
Fire Reaction	UNI EN ISO 13501-1:2019	Fire reaction class of wall coverings with	Fire Rated MDF substrate B-s1,d0 Fire Rated Plywood substrate B-s1,d1	
		Volatile organic compound emission (VOC)	UNI EN 16000-9:2006 Table D, annex I of Arrêté of 04/19/2011 publisce in Journal Officiel De La Republique Francaise on 05/13/2011 Tests performed on MDF panel with CIMENTO® coating and stain-resistant acrylic-based surface treatment	Volatile organic compound emission total (TVOC)
Formaldehyde emission	3.15 µg/m ³			
Toluene emission	2.47µg/m ³			
Xylene emission	1.46 µg/m ³			
Emission of Acetaldehyde, Tetrochloroethylene, 1,2,4-Trimethylbenzene, 1,2-dichlorobenzene, Ethylbenzene, 2-dibutoxyethanol, styrene	Tutti < 1 µg/m ³			
Emission class of total organic compounds	A+			
Surface hardness	UNI 10782:1999	Medium hardness, determined by the pencil method (harder pencil hardness that does not scratch)	H	
Surface resistance to abrasion	UNI EN 15185:2011	Resistance class achieved according to Cen/ts 16209	C	
Surface resistance to scratching	UNI EN 15186:2012 met. B	Resistance class achieved according to Cen/ts 16209 with load 0.9N	D	
Surface resistance to cold liquids	UNI EN 12720:2009	Visual evaluation of surface anomalies after contact with:	Distilled water, basic sweat, detergent solution, citric acid, ammonia	No evident signs
			Acetic Acid, Coffee, Ethanol, Acetone	Slight change visible only in reflected light
			paraffin oil	Slight surface degradation
		Resistance class accordingly to Cen/ts16209	C	
Surface resistance to chemicals	UNI EN 13442:2013	Visual evaluation, in diffused and direct light, of surface anomalies after contact with:	Distilled water, cleaning agent, red wine, coffee, tea, ammonia	No evident signs
			Acetone, ethanol, cow's milk,	Slight halo or barely visible mark
			Red wine vinegar,	slight mark visible from several directions
		Olive oil, black ink	pronounced mark	

CONTACTS

HEADQUARTER/SHOWROOM
Via J.F. Kennedy, 107/a - 30027 San
Donà di Piave - VE - ITALY

SHOWROOMS

IT
Via Borgogna, 7 - 20122
Milano - ITALY
showroom@cimento.tech
Tel. +39 02 82772692

CH
Piazza Santa Lucia, 7 - 6900
Massagno LUGANO-SWITZERLAND

UK
The Cube Building | 17-21 Wenlock
Road - N1 7GT
LONDON - UNITED KINGDOM

info@cimento.tech



www.cimento.tech

Tutte le informazioni contenute in questa brochure sono soggette a cambiamenti. Tutti i diritti sono riservati. Nessuna parte di questa brochure può essere riprodotta senza il nostro permesso scritto.

All the information on this brochure are subject to changes. All rights reserved. Reproduction in whole or in part of the contents of this brochure is prohibited without our written consent.

Jun2023

©CIMENTO®



www.cimento.tech

Rev. 22giu2023